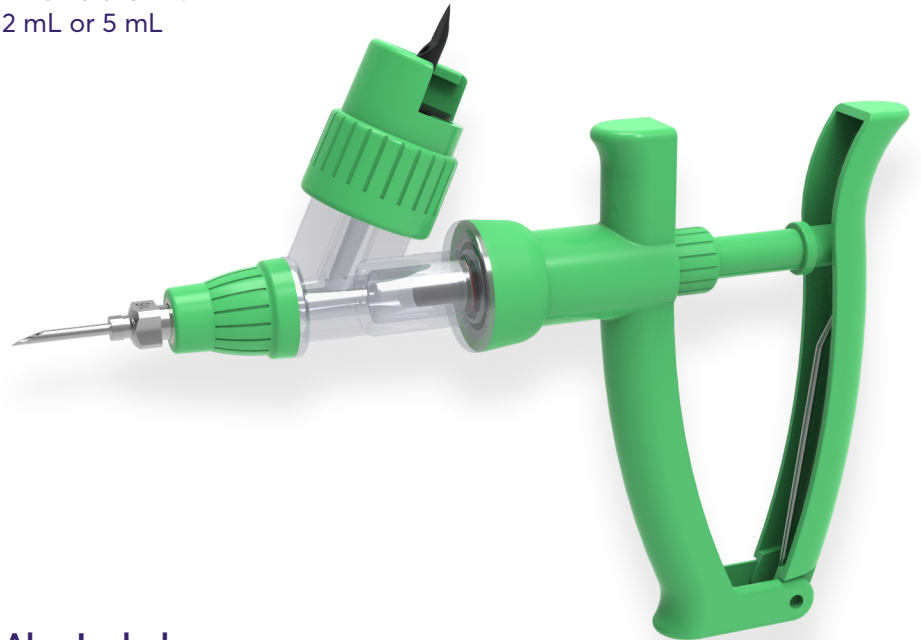


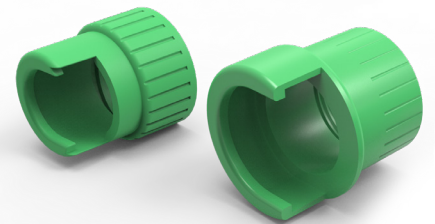
BMV Bottle Mount Injector

Put precision and accuracy in your hand.

Available In:
2 mL or 5 mL



Also Includes:
Small & Large
Bottle Adaptors



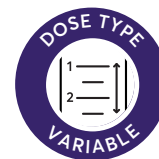
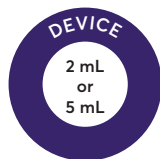
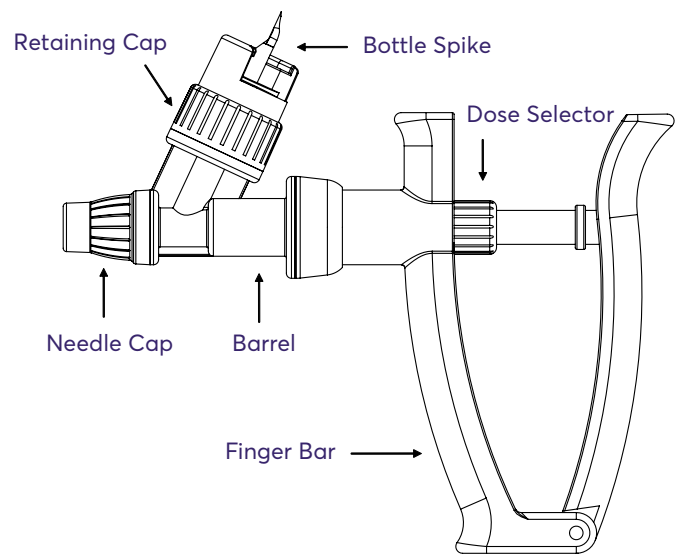
Ideal For:



Key Features:

- Compact and reliable design
- Easy attachment and detachment of needles
- Projected with a V-shaped spring for an equal pressure
- Luer Lock needle adaptor
- Inlet valve
- Suitable for all kinds of injection fluids
- Dosage clearly legible on the body of the syringe
- Dosage can be read on the piston of the syringe
- Adjustable by means the green rotary

BMV Bottle Mount Injector



OPERATING INSTRUCTIONS

1. Remove the bottle retainer cap from the applicator.
2. Slide the retaining cap onto product bottle via the opening provided.
3. Gently pierce the rubber cap on the product bottle with the draw off spike, and tighten the retaining cap firmly onto the applicator.
4. Set applicator to the maximum dose.
5. While holding applicator in horizontal position, squeeze the handle and release to allow product to enter barrel.
6. Adjust selector to desired dose rate. Turn the dose selector until front of piston is in line with the dose rate as marked on the barrel.

NOTE: The head of the piston on the 0.5 mL BMV is the main section above the o-ring and not the end of the extension.

7. Continue squeezing and releasing handle until all air is expelled from the barrel.

NOTE: To remove trapped air bubble in barrel, tilt the applicator to a 45° angle and repeat step 7 until air is expelled.

WARNING: Do not squeeze handle while altering dose.

CLEANING INSTRUCTIONS

1. Flush product residue from the barrel.
2. Flush hot, soapy water through the applicator until product is removed. Flush with clean water.
3. Remove barrel from finger bar and soak the o-ring on the piston with vegetable oil. (DO NOT USE MINERAL OIL)
4. Reattach barrel to the finger bar and store applicator in a cool, dry place.

NEEDLE FITTING INSTRUCTIONS

1. Note that the needle cap does not need to be removed when fitting needles.
2. Attachment of needle: DO NOT REMOVE CAP. Simply screw needle in clockwise direction until secure. (Finger tight.)
3. Removal of needle: Turn needle counter-clockwise and pull gently.

NOTE: If the needle is difficult to remove, twist the needle cap counter-clockwise to loosen needle. Tighten needle cap back on to applicator.