

VS Premium Injector

Industry-leading design
for safety and precision.



Ink Stamp



Needle Guard

Available In:

0.5 mL, 1mL, 2 mL, or 5 mL
Bottle Mount or Tube Fed

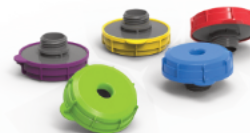
Includes:

- 1 Needle Guard
- 4 Coloured Identification Bands
- 2 Needle Removal Tools



Accessories:

Multi-Coloured Ink Stamps
Non-Needle Guard Assembly

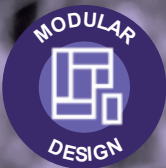


Ideal For:



Key Features:

- Module design
 - Configurable as either a tube fed or bottle mount injector
 - Compatible with or without needle guard
 - Optional ink stamps available
- Reliable delivery with accurate, fixed dose volumes
- Removable needle guard prioritizes operator safety and reduces broken needles
- Optional ink stamps create a visible mark around the injection site to check injection location
- Coloured identification bands can be used to match the injector to the treatment



VS INJECTOR

TUBE FED AND BOTTLE MOUNT

The Simcro™ VS Injector has been designed from the ground up to meet all of your compliance and safety requirements to ensure you can administer your animal health vaccines and treatments with optimum animal health welfare, operator safety and treatment efficacy.



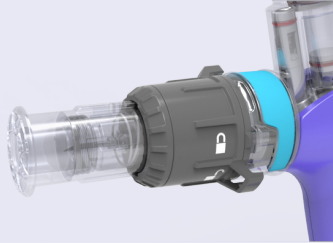
COMPLIANCE

Complies to on-farm treatment protocols with the delivery of accurate, fixed dose volumes.



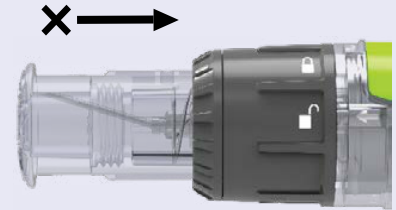
OPERATOR SAFETY

Minimises accidental needle stick injuries with a lockable, needle guard.



FOOD SAFETY

Reduces needle breakage during injection with the use of a needle guard.



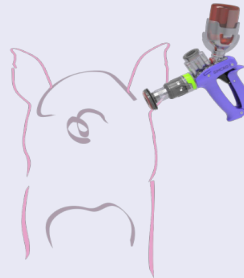
FOOD QUALITY

Attachable ink stamp creates a visible mark around the injection site to check the injection is administered in the correct location.



ANIMAL WELFARE

With a soft touch of the needle guard, the operator can delay needle penetration until the animal is settled.



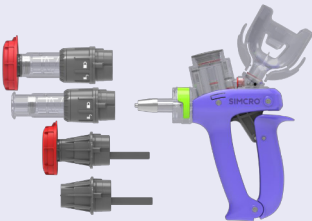
BIOSECURITY

Comply with on-farm hygiene regimes by disinfecting or boiling the injector.



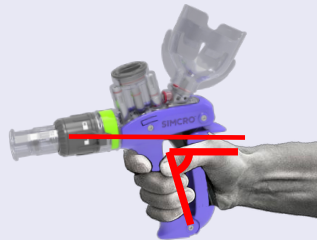
MODULAR SYSTEM

Configurable as either a Tube Fed or Bottle Mount injector, compatible with or without needle guard and ink stamps.



ERGONOMIC DESIGN

Comfortable, balanced injector for use over extended periods of time.

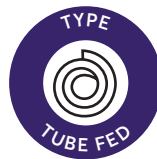
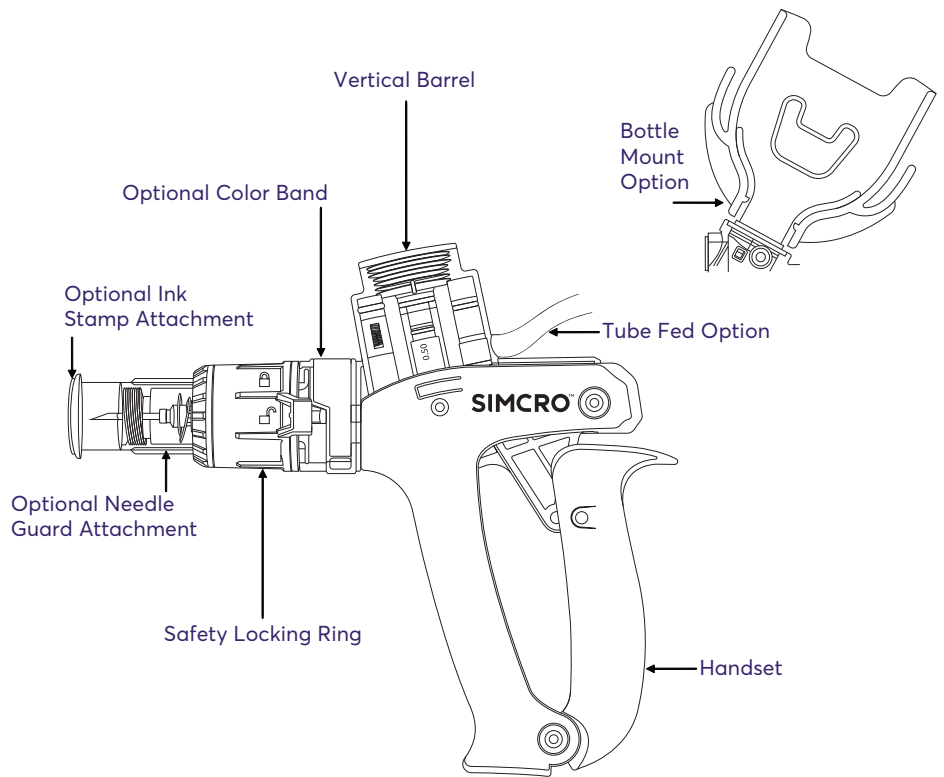


IDENTIFICATION

Complies to on-farm protocols with the use of coloured identification bands to match the injector to treatment.



VS Premium Injector



OR



OPERATING INSTRUCTIONS

1. Remove the bottle retainer cap from the applicator.
2. Slide the retaining cap onto product bottle via the opening provided.
3. Gently pierce the rubber cap on the product bottle with the draw off spike, and tighten the retaining cap firmly onto the applicator.
4. While holding applicator in horizontal position, squeeze the handle and release to allow product to enter barrel.
5. Continue squeezing and releasing handle until all air is expelled from the barrel.

NOTES:

- To remove trapped air bubble in barrel, tilt the applicator to a 45° angle and repeat step 5 until air is expelled.
- If using without the needle guard, the non-needle guard must be attached or the handle will remain locked.
- The safety locking ring must be locked to change out modular components.

CLEANING INSTRUCTIONS

1. Flush product residue from the barrel.
2. Flush hot, soapy water through the applicator until product is removed. Flush with clean water.
3. Remove barrel from handset and soak the o-ring on the piston with vegetable oil. (DO NOT USE MINERAL OIL)
4. Reattach barrel to the handset and store applicator in a cool, dry place.

NEEDLE FITTING INSTRUCTIONS

1. Note that the needle guard does not need to be removed when fitting needles.
2. Attachment of needle: do not remove needle guard. Simply screw needle in clockwise direction until secure. (Finger tight.)
3. Removal of needle: Turn needle counter-clockwise and pull gently.

NOTE:

If the needle is difficult to remove or has been overtightened, remove the needle guard and use pliers to remove the needle.