



## SPECIFICATIONS

### General

Microprocessor-based, software controlled high reliability electronics, enclosed in an all-metal case.

### Operation

Detects pregnancy in many small and medium size mammals by means of A-Mode Ultrasonic echoes. The standard instrument is calibrated for swine.

### Animal Selection

User can easily set the instrument for the type of animal to be tested.

### Temperature Range

0 to 120 F. (-18 to 49 C)

### Power Supply

Self-contained, rechargeable nickel metal hydride battery pack.

### Battery Pack Life

Approximately 2-4 years (1000 charges/discharges).

### Operating Time

Approximately 8 hours on full charge.

### Battery Charger

115 V., unless 230 V. requested.

### Charging Time

Approximately 14 hours for full charge.

### Size

6 x 2.7 x 2.15 inches  
(15.3 x 6.9 x 5.5 cm)

### Weight, Preg-Tone Only

15.4 oz (432 g).

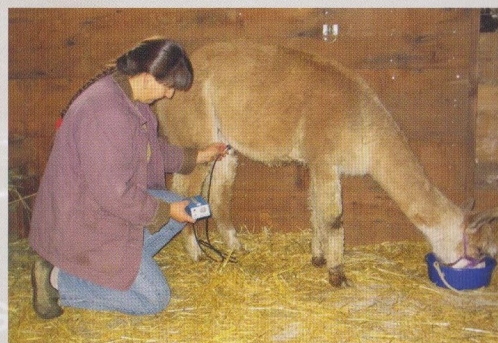
### Shipping Weight, Complete Package

2.1 lbs (930 g)

# PREG-TONE®

## SERIES 6

*"Ultrasound for Ultra Profits"®*



*Pregnancy testing alpacas is a snap with the Preg-Tone and wins out over the spit-test.*

*Be sure to visit our web site given below for much more information on the PREG-TONE and our other products.*

THE PREG-TONE IS NOT FOR HUMAN USE.

Renco Corporation  
116 Third Ave. North  
Minneapolis, Minnesota 55401, USA

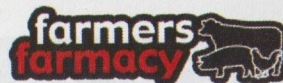
Tel: 612-338-6124

Toll Free: 1-800-359-8181

Fax: 612-333-9026

Website: [www.rencoCorp.com](http://www.rencoCorp.com)

Email: [sales@rencoCorp.com](mailto:sales@rencoCorp.com)



[www.farmersfarmacy.com](http://www.farmersfarmacy.com)  
1-866-527-6229

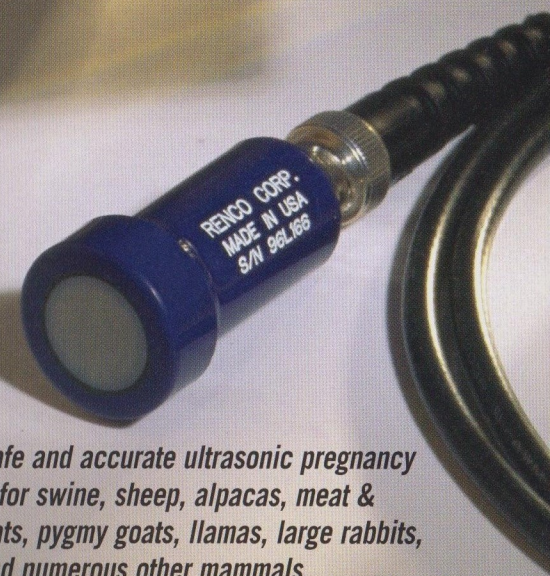
US PATENT NO: 4112927 FORM 108PT

© 2008 RENCO CORPORATION ALL RIGHTS RESERVED.

**RENCO®**  
CORPORATION

# PREG-TONE®

## SERIES 6



*A fast, safe and accurate ultrasonic pregnancy detector for swine, sheep, alpacas, meat & dairy goats, pygmy goats, llamas, large rabbits, foxes, and numerous other mammals.*



## NO LIGHTS TO WATCH NO BUTTONS TO PUSH

For over 30 years, the Renco *PREG-TONE* has been the premier ultrasonic pregnancy detector for animals. Ultrasonic pregnancy detection with the *PREG-TONE* is a proven and accepted herd management technique. Among the numerous benefits are:

- Identification of feed-wasting non-producers and low producers at very early stages.
- Confirmation of pregnancy in animals purchased or sold.
- Savings resulting from increase in overall operating efficiency permitting more efficient use of expensive farrowing installations.

The patented *PREG-TONE* uses high frequency sound waves called ultrasound to detect amniotic fluid present during pregnancy. When this fluid is detected, the instrument produces a **loud continuous tone**. When used on an animal which is not pregnant, the instrument produces an **intermittent recurring tone**. The intermittent tone also indicates that good skin contact is being made.

### No guessing and no question. 100% accuracy between 30 and 45 days depending on the animal type.

The *PREG-TONE* has been tested against other ultrasound instruments by leading universities throughout the world. Their studies show the *PREG-TONE* as the superior instrument, in both accuracy and ease of use. (Studies available upon request).

#### EXAMPLES:

**Swine:** Testing may begin as early as 18 days (large litters, 11-12 piglets, will show positive at this stage), and open sows can be diagnosed as early as 30 days. Normal testing time in sows and gilts is 30-73 days.

**Sheep:** Using the position shown below, pregnancy testing in ewes can begin at 35 days with most diagnoses made by 45 days. Testing can also be done in the normal standing position, providing diagnosis at 60-65 days.

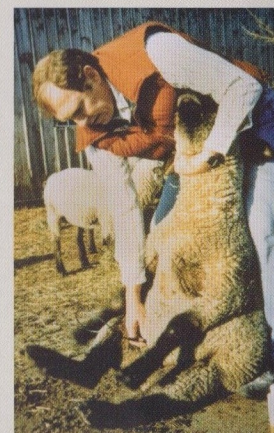
**Goats:** Testing may begin at 30-40 days on the right side. Put oil on test site. Probe is placed 2 in. (5cm) in front of the rear leg and 1-in (2.5cm) above the teat. When probe is in good contact, the intermittent tone will be heard. Aim probe 45° upwards and forwards i.e. towards the last rib. Scan across the uterus. If pregnant, the tone will turn into a continuous tone. Dairy goats such as the Oberhasli can be tested as early as 20 days.

**Alpacas:** Testing can begin at 30-40 days. Alpacas and llamas are tested on the left side. If unsuccessful, try the procedure on the right side. Place probe 6-8-in (15-20cm) down from the udder. (On maidens about 5-in (12cm)). Point probe straight into the abdomen at an angle defined by the shape of the abdomen.

#### Uses only loud, easy to hear tones.

During testing, no lights are used, no buttons are pushed, thus attention is not diverted from the animal. A short, intermittent tone indicates good contact, while a loud, continuous tone indicates pregnancy. Since the *PREG-TONE* uses only loud, easy to hear tones to indicate both pregnancy and non-pregnancy, it can be clipped on the belt or kept in a pocket.

**The *PREG-TONE* does not  
need to be seen or held  
during testing.**



#### Rechargeable Nickel Metal Hydride (NMH)

Specially chosen by Renco Corporation to assure long life, the battery pack will last for years, and give many hours of testing on one charge. The *PREG-TONE* automatically turns itself off when the battery needs recharging, protecting the user against erroneous readings due to insufficient power. The battery is environmentally friendly, and a battery charger is included.

#### Rugged, all-metal construction.

#### Small enough to slip in your pocket.

All-metal construction guarantees against interference by radio waves in the atmosphere, a major accuracy problem with some ultrasound instruments. It is constructed of heavy gauge aluminum for ruggedness and ease of cleaning, yet the *PREG-TONE* is still lightweight and small enough to slip in your pocket.

**For simple, accurate, and economical  
pregnancy testing, use the system proven  
superior by leading universities.**

**THE RENCO *PREG-TONE*®**