



# Identify open cows on your schedule, on your farm

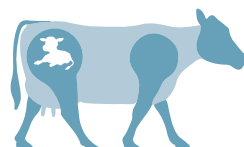
**The Alertys™ OnFarm Pregnancy Test** detects pregnancy-associated glycoproteins (PAGs) in whole blood (EDTA) as early as 28 days postbreeding and 70 days postcalving. Use this on-farm pregnancy test to:

- Increase safety for you and your workers.
- Decrease subjectivity and time spent training.
- Read results easily to make decisions quickly.
- Find open animals in just 20 minutes.

Learn more at [idexx.com/onfarm](https://idexx.com/onfarm) and order through your distributor.



**The Alertys OnFarm Pregnancy Test and all Alertys tests outperform ultrasound and palpation**



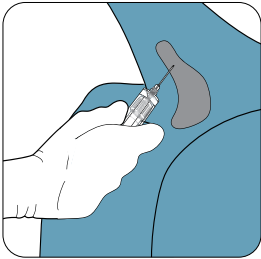
Test name (sample type)	Testing site	Sensitivity		
<b>Alertys™ OnFarm Pregnancy Test</b> (blood)	On your farm or at a veterinary clinic	99.7% <sup>1</sup>	Ultrasound ranges from 77.8%—90.5% <sup>3</sup>	Palpation 84.6% <sup>4</sup>
<b>Alertys™ Rapid Visual Pregnancy Test</b> (blood)	At a veterinary clinic	98% <sup>2</sup>		
<b>Alertys™ Ruminant Pregnancy Test</b> (blood)	At a laboratory	100% <sup>3</sup>		

With ultrasound and palpation, **1 to 2 out of 10** pregnant cows are misdiagnosed as open.

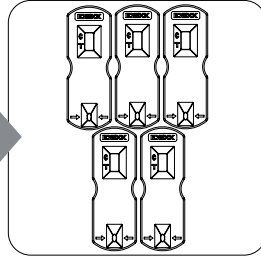


# The Alertys™ OnFarm Pregnancy Test is easy to use and easy to read

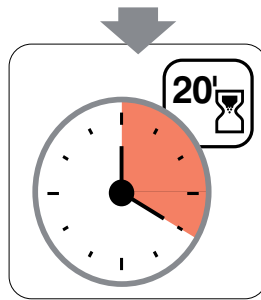
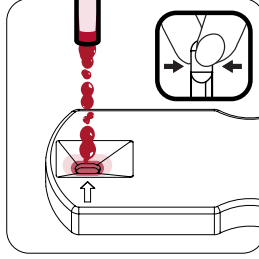
Reduce stress for you and your animals with pregnancy testing you can perform yourself any time your animals are in the chute. Use this algorithm to know if your cows are pregnant or open.



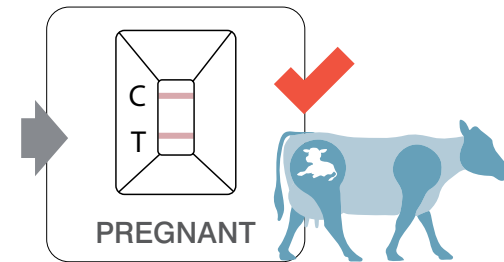
Draw blood from the underside of the tail.



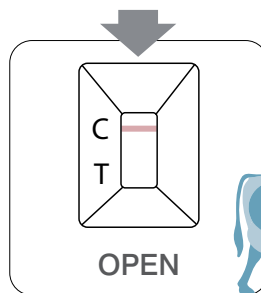
Run multiple tests at the same time.



Read results in just 20 minutes.



PREGNANT



OPEN

Take action:  
Cull • Breed • Synchronize

Start testing to identify open animals today!



1-866-527-6229  
farmersdepot.ca

## References

1. Data on file at IDEXX Laboratories, Inc. Westbrook, Maine USA.
2. Mayo LM, Moore SG, Pook SE, Silvia WJ, Lucy MC. Technical note: Validation of a chemical pregnancy test in dairy cows that uses whole blood, shortened incubation times, and visual readout. *J Dairy Sci.* 2016;99(9):7634–7641. doi:10.3168/jds.2016-11224
3. Fosgate GT, Motimele B, Ganswindt A, Irons PC. A Bayesian latent class model to estimate the accuracy of pregnancy diagnosis by transrectal ultrasonography and laboratory detection of pregnancy-associated glycoproteins in dairy cows. *Prev Vet Med.* 2017;145:100–109. doi:10.1016/j.prevetmed.2017.07.004
4. Ghaidan MT, Dana OI, Dyary HO. Accuracy of bovine pregnancy-associated glycoproteins (bPAGs) in the diagnosis of pregnancy: A comparative study of three pregnancy diagnostic methods. *Pol J Vet Sci.* 2019;22(4):769–775. doi:10.24425/pjvs.2019.131409

© 2022 IDEXX Laboratories, Inc. All rights reserved. • 09-2690213-00  
All ®/TM marks are owned by IDEXX Laboratories, Inc. or its affiliates in the United States and/or other countries. The IDEXX Privacy Policy is available at [idexx.com](http://idexx.com).

Test with Confidence™

IDEXX