



Alertys OnFarm Pregnancy

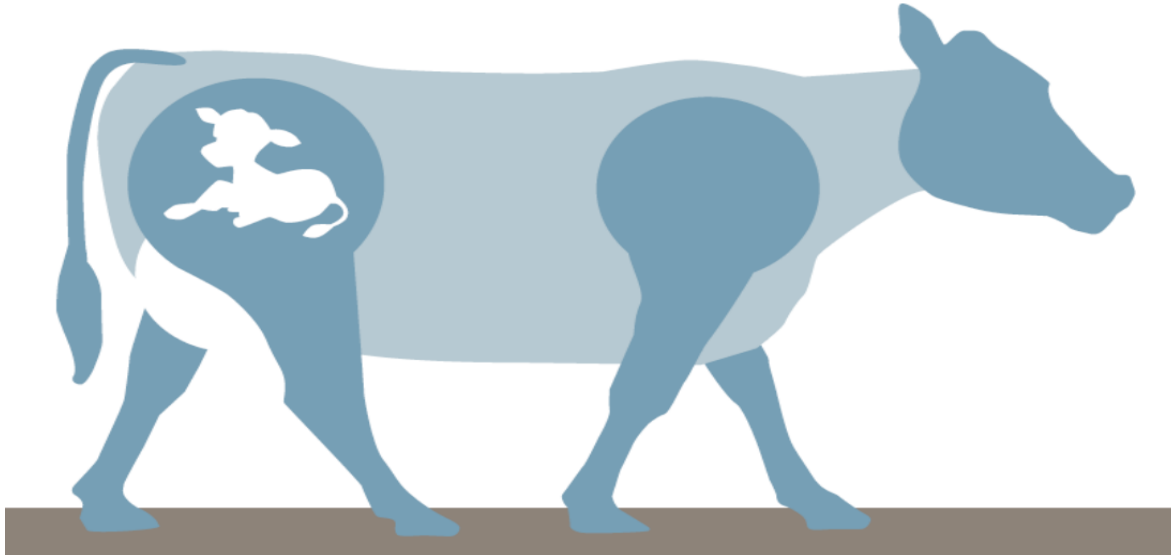
Jim Rhoades, DVM

Professional Services Veterinarian, Ruminant Business

2022

Agenda

IDEXX Alertys™



Pregnancy Tests

- Who is IDEXX?
- Pregnancy Associated Glycoproteins (PAGs)
- Alertys product family
- IDEXX Alertys™ OnFarm pregnancy test

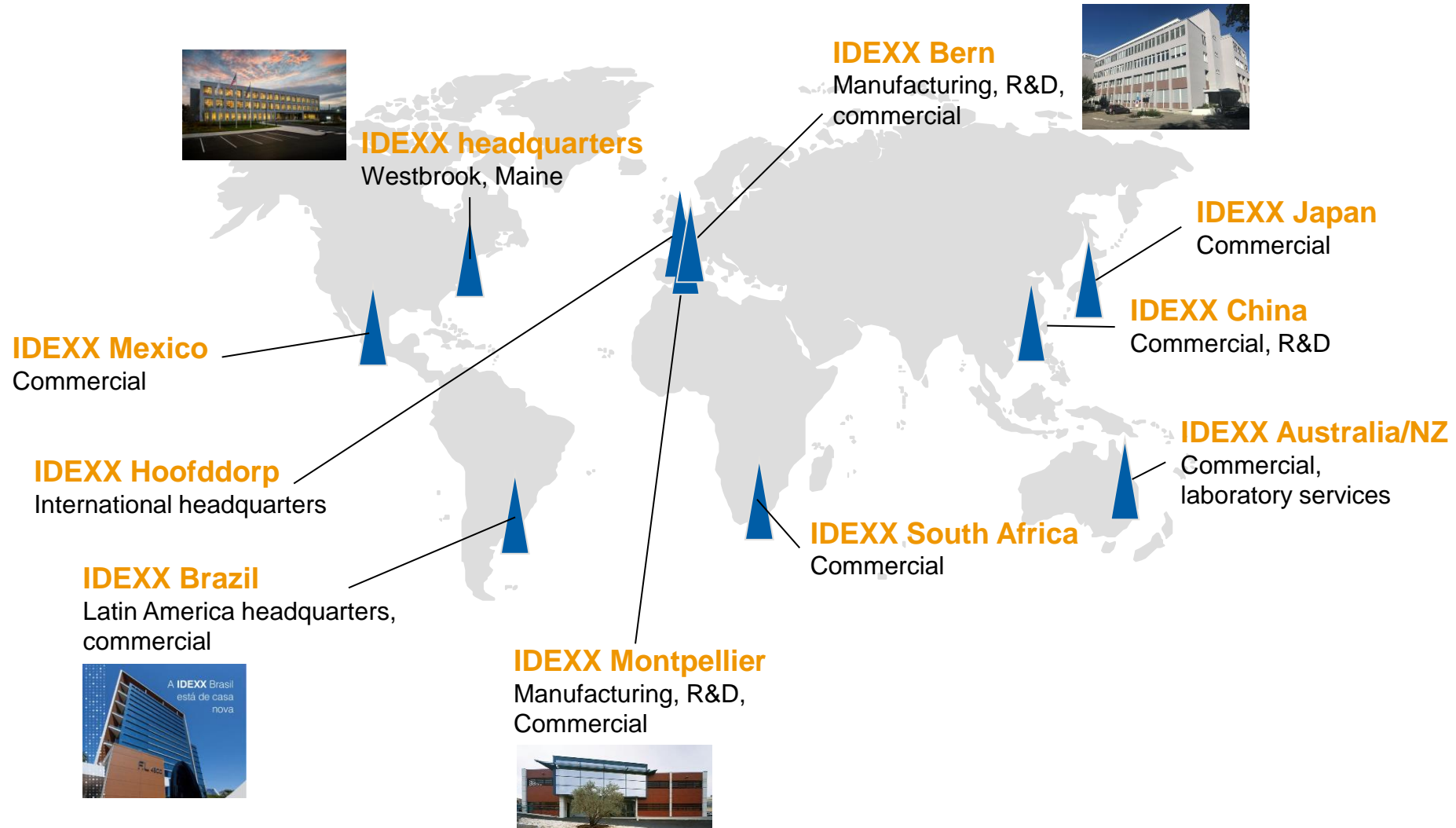


Our Purpose:

... enhancing the health and well-being of pets, people and livestock



IDEXX Livestock, Poultry, and Dairy global operations



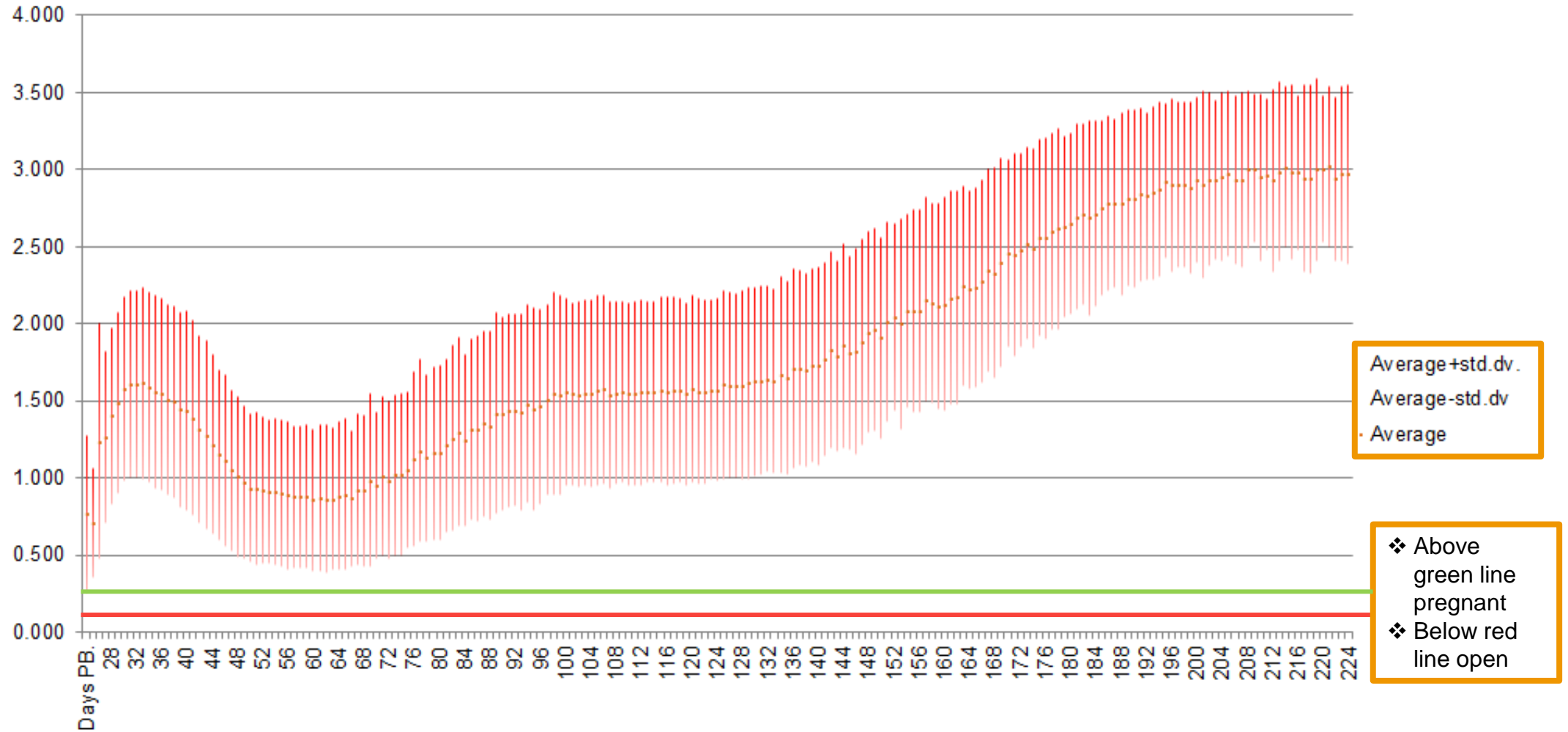
What do Alertys Pregnancy tests measure?

Pregnancy Associated Glycoproteins (PAGs)

- ❖ PAGs belong to Aspartic Peptidase class. They are divided into Ancient & Modern groups.
- ❖ PAGs are expressed by placental trophoblast cells. All ruminant placentas have trophoblast cells.
- ❖ There are at least 26 unique cow PAGs. Number of PAGs have been cloned from goat, sheep, giraffe, bison, deer, boar and buffalo
- ❖ The biological significance of PAG is unknown. However, PAGs have been successfully used as pregnancy marker.



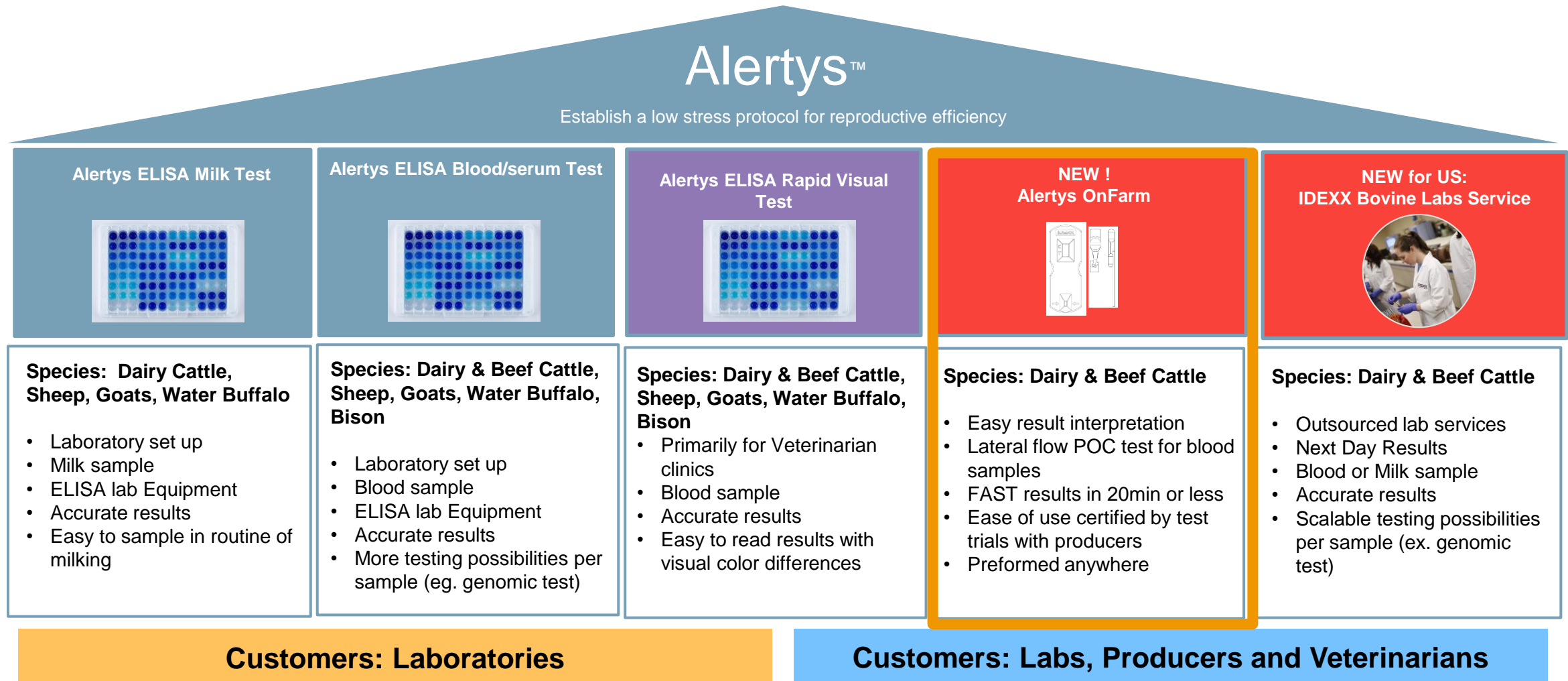
PAG-VALUES (S-N)



*From RYK and the Danish Milk Recording Scheme courtesy Dr. Henning-Nielsen

© 2022IDEXX Laboratories, Inc. All rights reserved.

IDEXX's Alertys portfolio offers multiple sample-based pregnancy testing solutions



Comparative reference

Sensitivity and specificity: overview of current pregnancy diagnostic options

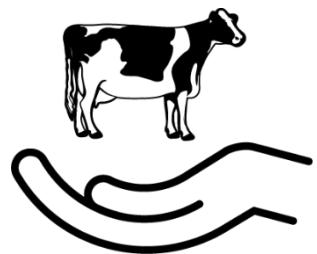
Alertys™ and other tests	Sensitivity (95% CI)	Specificity (95% CI)
Alertys™ Milk Pregnancy Test <i>Validation report</i>	98.7% n = 1,839	94.4% n = 1,839
Alertys™ Ruminant Pregnancy Test <i>Validation report</i>	99.3% n = 810	93.8% n = 810
Alertys™ RVPT Pregnancy Test <i>Validation report whole blood</i>	99.1% (96.5-99.9) 28 >105 DPB n=220	95.0% (89.2-97.9) DPC >60 n=120
Alertys™ OnFarm Pregnancy Test <i>Validation report whole blood</i>	99.7% n=290	98.1% DPC ≥70 n=80
Transrectal ultrasound on a dairy farm <i>Fosgate 2017</i>	77.8%-90.5% n=1165 cows	94.7%-99.8% n=1165 cows

Alertys OnFarm Preg Test Instructional Video

Common Questions for Alertys OnFarm Preg Testing

- **Where do you draw the blood at?**
Tail is the easiest and best option in the field. Although blood can be drawn from any vein or artery (jugular, mammary, etc.)
- **Will the test tell how far along the pregnancy is?**
For example: 4 months, no. It is only a qualitative test; results are only pregnant or open.
- **How many days after breeding will the test detect pregnancy?**
Kit can detect pregnant cows from day 28 until the end of gestation.
- **Can you detect pregnancy at 30 days?**
Yes, from 28 days until the end of the pregnancy.
- **Temperature sensitive?**
Ideally used between 59F-86F
- **Other materials needed?**
Customers will need EDTA blood collection supplies including needle, EDTA tube (purple top), and holder. Some producers will want to use a syringe/needle instead of a blood collection needle/holder.

Benefits of Alertys Sample-Based Pregnancy Testing



Less handling,
less stress for the cows
and employees



Streamlined employee
training and improved
safety



Open cow detection
throughout gestation



Improve reproductive
performance



Thank you for participating!