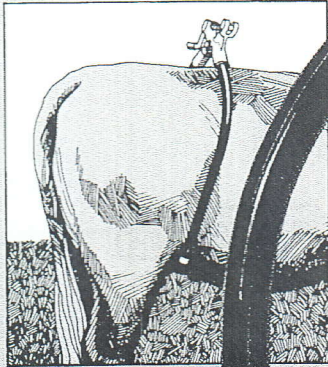
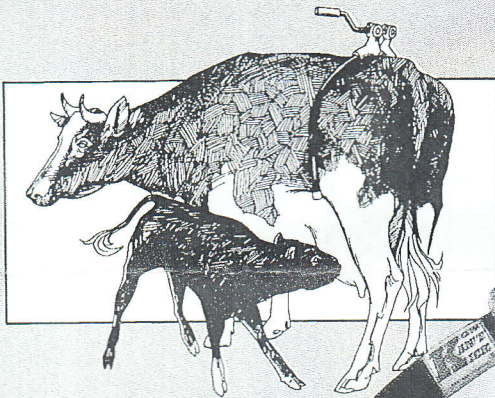


WESTERNS **KOW KAN'T KICK**™

ITEM NO. 49-250

(Former Item No. AK-368)



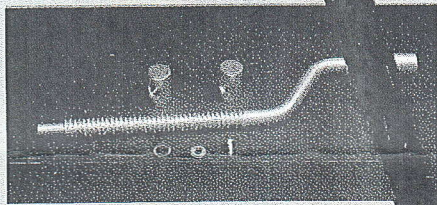
CLAMP DOWN ON WILD, UNRULY ANIMALS

Kow Kan't Kick is used and recommended by DVM's, dairymen and livestock producers around the world.

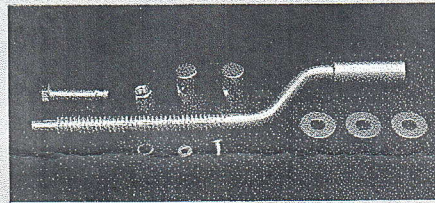
Kow Kan't Kick is still the safest, easiest and most humane way to stop wild and unruly cows from kicking. Pays for itself by preventing injury to man and animal. Helps prevent stall accidents, chain cuts and spilled milk. Keeps animals quiet during examinations, surgical work, artificial insemination and helps train heifers with first calf.

Kow Kan't Kick fits any size animal. Slips over back depressing muscles that control kicking—immobilizes rear legs without pain or injury. Works on either side of pin bone. Rubber-tipped arms protect animal against injury in tender areas. Precision-machined crank with Acme threads on both handle and nut, closes arms easily and quickly from either right or left side of cow.

Kow Kan't Kick is strong, sturdy, easily applied and "number one" for safety!



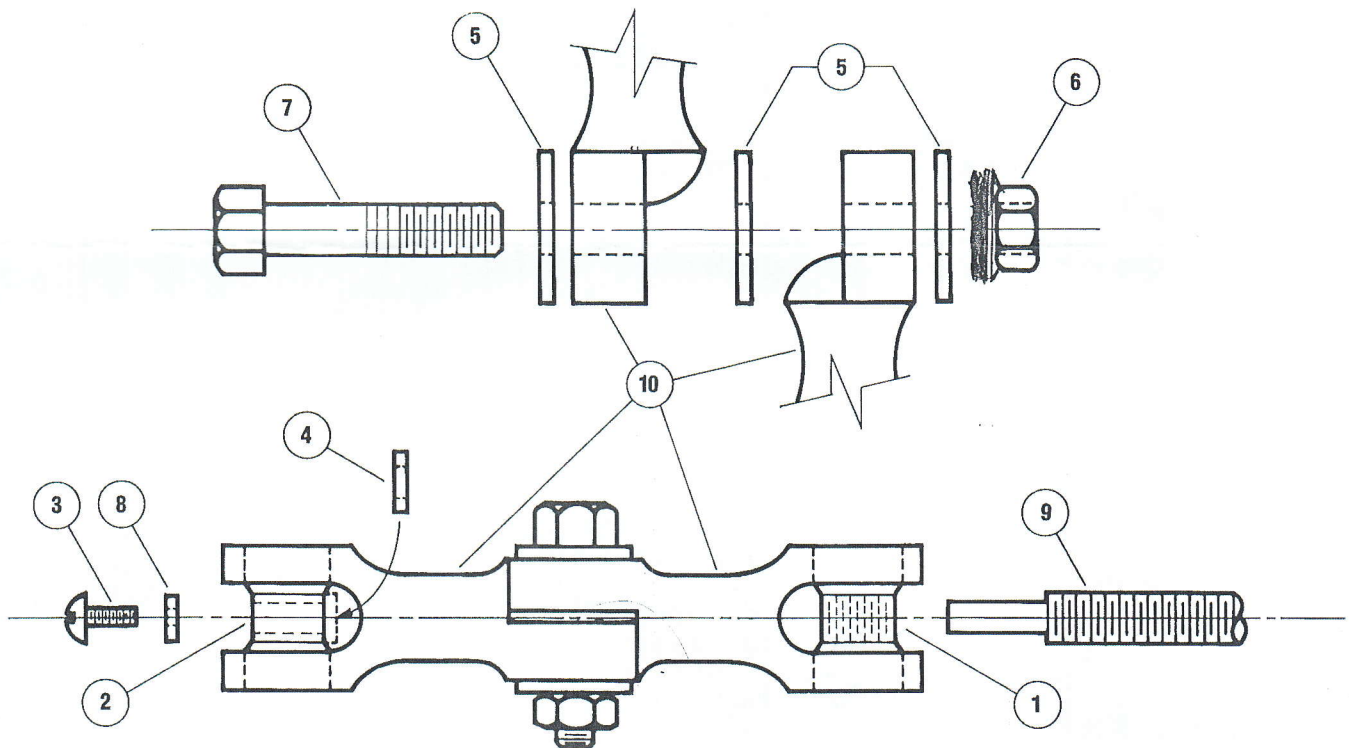
**PARTIAL HANDLE
ASSEMBLY PACKAGE**
ITEM NO. 49-310
(Former Item No. AK-388)



**COMPLETE HANDLE
ASSEMBLY PACKAGE**
ITEM NO. 49-315
(Former Item No. AK-389)



WESTERN
S A L E S



REF. NO.	NO. REQUIRED	PART NO.	FORMER PART NO.	DESCRIPTION
1	1	49-255	AK-369	Threaded Bushing
2	1	49-260	AK-370	Unthreaded Bushing
3	1	49-265	AK-371	Screw 1/4"-20 x 1/2"
4	1	49-270	AK-372	Thrust Washer
5	3	49-275	AK-373	Washer 1/2" Wrought Plated
6	1	49-280	AK-374	Nut 1/2"-13N.C. Hex Plated
7	1	49-285	AK-375	Bolt, Special
8	1	49-290	AK-376	Washer 3/16" Wrought Plated
9	1	49-295	AK-377	Threaded Handle
10	2	49-300	AK-378	Leg & Casting Assembly
(NOT SHOWN)	2	49-305	AK-379	Leg Cap

ASSEMBLY INSTRUCTIONS

Assembling Two Halves.

1. Insert one washer ⑤, on bolt ⑦, push bolt through one-half of instruments ⑩.
2. Insert second washer ⑤. Push other half ⑩, on bolt ⑦.
3. Insert third washer ⑤. Tighten bolt ⑦, and nut ⑥.

Assembling Threaded Handle.

4. Insert threaded bushing ① as shown in illustration.
5. Insert threaded handle ⑨ into threaded bushing ①.
6. Make sure washer ④ is put on threaded handle ⑨ after it has gone through threaded bushing ①.

7. Push through unthreaded bushing ②.

8. Insert screw ③ and washer ⑧ into threaded handle and tighten.

Make sure all parts are thoroughly oiled and greased at all times. If steel tubing arms are too long they may be sawed off to fit cow. Place Kow Kant Kick in front (not back) of hip bones letting the arms drop straight down in the hollow of the flank in front of the stifle joint. Tighten instrument until snug on cow. If too tight the cow may fall.