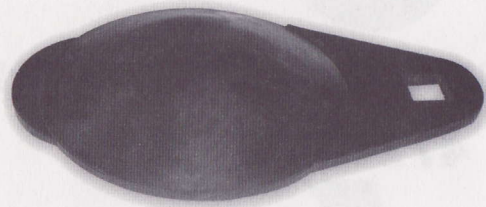
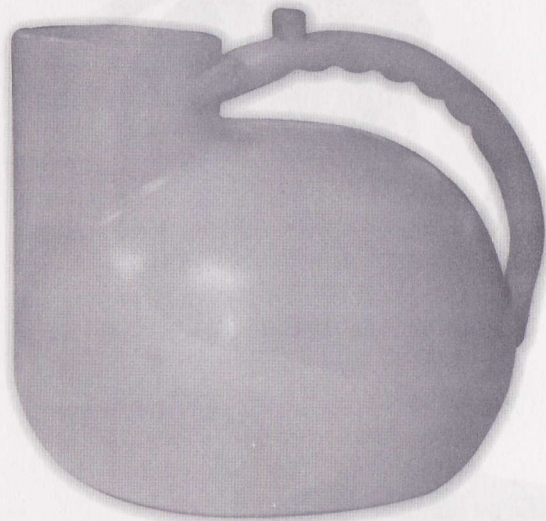


PARTS



4721007
Lid



4721005
Jug



ST1632 Silicone Tubes
3 ft. length (1/2" ID)



4721006
Elbow Connector

INSTRUCTIONS

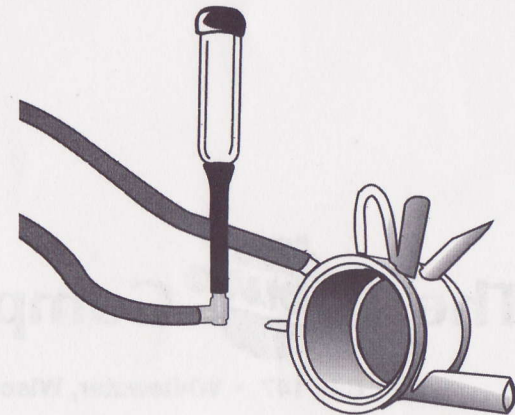
Please Read before Use

- Always carry your EasyPour by the handle, not by the tubes alone. Tubes and handle may be grasped together leaving one hand free.
- **No milk from cows treated with antibiotics, even the unaffected quarters, may enter the pipeline.** Do not use the EasyPour to milk out an antibiotic quarter unless the remaining quarters are going to be used to feed calves. **Milk from antibiotic quarters must always be dumped.**
- **After every use, clean and sanitize** your EasyPour jug, lid, and hoses, the same way you clean your milking equipment. Use approved dairy cleansers, follow manufacturer's recommendations and allow to dry thoroughly. Occasional soaking in acid solution and brushing is recommended to remove mineral deposits from tubes.
- **IMPORTANT !** Do not allow the EasyPour jug to become more than 3/4 full. Adequate head room must be maintained in the jug to avoid milk being sucked back to the claw. Always place the jug on a level surface where it cannot be kicked by the cow or otherwise tipped over.

Instructions for Use

Test for mastitis using a strip cup or mastitis test device. To milk out an affected quarter, first assemble your unit as shown on the front cover. The Elbow Connector attaches to the end of one of the hoses and is designed to fit most inflations.

Remove the inflation for the affected quarter from the claw. Attach that inflation to the Elbow Connector. Attach the other QuarterMilker hose to the claw.



Milk the cow normally. Suspect milk will be deposited in the EasyPour and the milk from the other three quarters will go into the pipeline.

To empty, there is no need to remove the flapper-style lid. Just tip the EasyPour forward like a pitcher and pour out the milk.